

Flute

Dickinson 2017 Pre-Show

5-11-17

inspired by
James Horner's "Apollo 13 - Main Title"

Arr. by
Carol Brittin Chambers

♩ = 128

7 4

A **B**

♩ = 152

5 5

C div. unis.

ff *p*

30

p *p* *p* *p* *p* *p*

D

sub. p

38

ff *fff*

Clarinet in B \flat 1

Dickinson 2017 Pre-Show

5-11-17
inspired by
James Horner's "Apollo 13 - Main Title"

Arr. by
Carol Brittin Chambers

$\text{♩} = 128$

Musical staff with rests and fingerings 7 and 4.

A $\text{♩} = 152$ **B**

Musical staff with rests and fingerings 5.

C

Musical staff with notes and dynamics *ff*.

30

Musical staff with notes and dynamics.

D

Musical staff with notes and dynamics *sub. p*.

38

Musical staff with notes and dynamics *ff* and *fff*.

Bass Clarinet

Dickinson 2017 Pre-Show

5-11-17

inspired by
James Horner's "Apollo 13 - Main Title"

Arr. by
Carol Brittin Chambers

♩ = 128

Musical staff with rests and fingerings 7 and 4.

A

♩ = 152

B

Musical staff with rests and fingerings 5 and 5.

C

Musical staff with notes and dynamics *ff*.

30

Musical staff with notes and dynamics.

D

Musical staff with notes and dynamics *fp*.

38

Musical staff with notes and dynamics *ff* and *fff*.

Alto Sax

Dickinson 2017 Pre-Show

5-11-17
inspired by
James Horner's "Apollo 13 - Main Title"

Arr. by
Carol Brittin Chambers

♩ = 128

7 4

A ♩ = 152 **B**

5 5

C div. *ff* unis.

30 div.

D *sub. p*

38 *ff* *fff*

Tenor Sax

Dickinson 2017 Pre-Show

5-11-17
inspired by

James Horner's "Apollo 13 - Main Title"

Arr. by
Carol Brittin Chambers

♩ = 128

Musical staff with rests and fingerings 7 and 4.

A ♩ = 152 B

Musical staff with rests and fingerings 5 and 5.

C

Musical staff with notes and dynamics *ff*.

30

Musical staff with notes and dynamics.

D

Musical staff with notes and dynamics *ff* and *fp*.

38

Musical staff with notes and dynamics *ff* and *fff*.

Baritone Sax

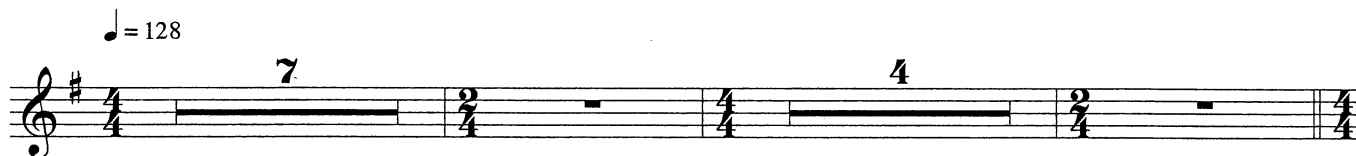
Dickinson 2017 Pre-Show

5-11-17

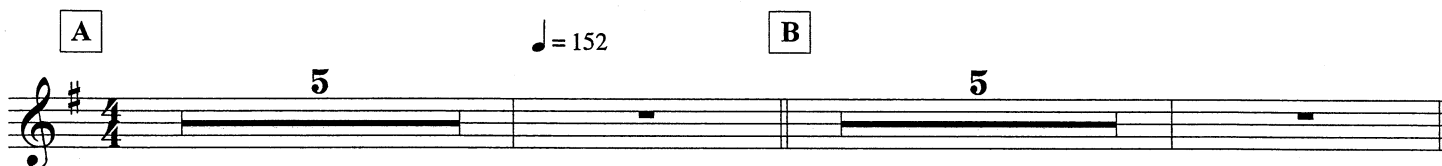
inspired by
James Horner's "Apollo 13 - Main Title"

Arr. by
Carol Brittin Chambers

♩ = 128



A ♩ = 152 **B**



C



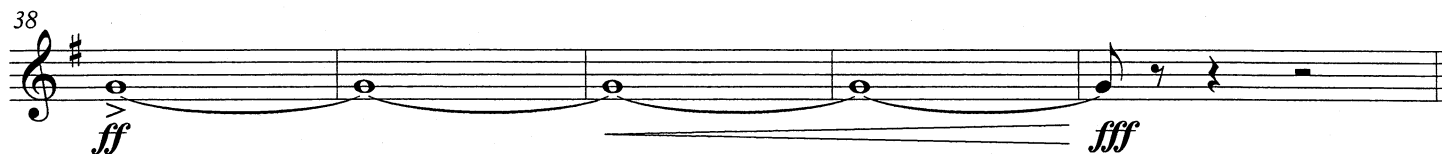
30



D



38



Trumpet in B \flat 1

Dickinson 2017 Pre-Show

5-11-17
inspired by
James Horner's "Apollo 13 - Main Title"

Arr. by
Carol Brittin Chambers

$\text{♩} = 128$

3

Solo

mp

7

mp

12

A

mp *mf*

18

$\text{♩} = 152$

B Tutti

mp *f* *mp*

23

C

fp *ff*

28

b.p.

33

D

sub. p

38

div.

ff *fff*

Trumpet in B \flat 2, 3

Dickinson 2017 Pre-Show

5-11-17
inspired by
James Horner's "Apollo 13 - Main Title"

Arr. by
Carol Brittin Chambers

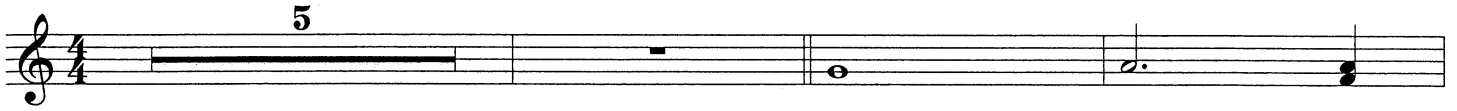
$\text{♩} = 128$



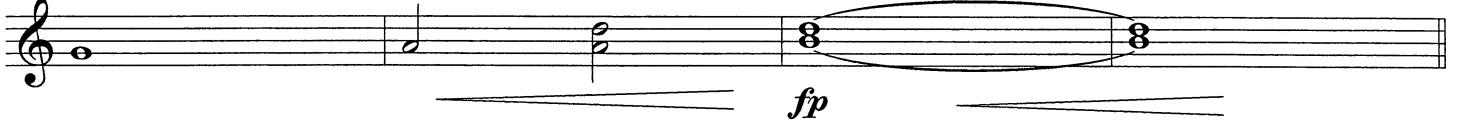
A

$\text{♩} = 152$

B



22



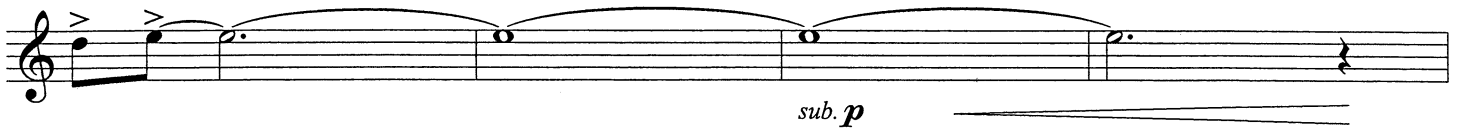
C



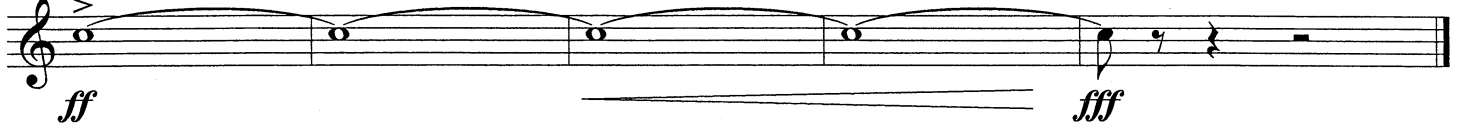
30



D



38



Horn in F 1

Dickinson 2017 Pre-Show

5-11-17

inspired by
James Horner's "Apollo 13 - Main Title"

Arr. by
Carol Brittin Chambers

♩ = 128

Musical staff with rests and fingerings 7 and 4.

A

♩ = 152

B

Musical staff with rests, fingerings 5, and dynamics *mp* and *f*.

Musical staff with dynamics *mp* and *fp*.

C

Musical staff with dynamics *ff*.

Musical staff with "div." marking and dynamics.

D

Musical staff with dynamics *sub. p*.

Musical staff with dynamics *fff*.

Trombone 1

Dickinson 2017 Pre-Show

5-11-17

inspired by

James Horner's "Apollo 13 - Main Title"

Arr. by

Carol Brittin Chambers

♩ = 128

Musical staff with rests and rehearsal marks 7 and 4.

A

♩ = 152

B

Musical staff with rehearsal mark A, a rest of 5 measures, and rehearsal mark B.

mp *f*

Musical staff starting at measure 22 with notes and dynamics.

mp *fp*

C

Musical staff starting at measure 26 with notes and dynamics.

ff

Musical staff starting at measure 30 with notes and dynamics.

D

Musical staff starting at measure 34 with notes and dynamics.

ff *fp*

Musical staff starting at measure 38 with notes and dynamics.

ff *fff*

Trombone 2

Dickinson 2017 Pre-Show

5-11-17

inspired by

James Horner's "Apollo 13 - Main Title"

Arr. by

Carol Brittin Chambers

♩ = 128

Musical staff with a bass clef and a key signature of one flat. It contains four measures of rests. Above the first measure is a '7' with a line underneath, and above the third measure is a '4' with a line underneath. The time signature is 4/4.

A

♩ = 152

B

Musical staff with a bass clef and a key signature of one flat. It contains two measures of rests. Above the first measure is a '5' with a line underneath. The time signature is 4/4. Dynamics markings include *mp* and *f* with hairpins.

22

Musical staff with a bass clef and a key signature of one flat. It contains four measures of music. The first measure has a half note, followed by two quarter notes, and a final half note with a slur. Dynamics markings include *mp* and *fp* with hairpins.

C

Musical staff with a bass clef and a key signature of one flat. It contains four measures of music. The first measure has a half note with an accent (>), followed by three quarter notes. The time signature is 4/4. Dynamics marking is *ff*.

30

Musical staff with a bass clef and a key signature of one flat. It contains four measures of music. The first measure has a half note with an accent (>), followed by two quarter notes, and a final half note with an accent (>). The time signature is 4/4. Dynamics marking is *ff*.

D

Musical staff with a bass clef and a key signature of one flat. It contains four measures of music. The first measure has a half note with an accent (>), followed by two quarter notes, and a final half note with an accent (>). The time signature is 4/4. Dynamics markings include *ff* and *fp* with hairpins.

38

Musical staff with a bass clef and a key signature of one flat. It contains four measures of music. The first measure has a half note with an accent (>), followed by two quarter notes, and a final half note with an accent (>). The time signature is 4/4. Dynamics markings include *ff* and *fff* with hairpins.

Baritone (B.C.)

Dickinson 2017 Pre-Show

5-11-17

inspired by

James Horner's "Apollo 13 - Main Title"

Arr. by

Carol Brittin Chambers

♩ = 128

Musical staff with a bass clef and a key signature of two flats. It contains four measures of rests. Above the first measure is a '7' with a horizontal line underneath. Above the third measure is a '4' with a horizontal line underneath. The time signature changes from 4/4 to 2/4, then back to 4/4, and finally to 2/4.

A

♩ = 152

B

Musical staff with a bass clef and a key signature of two flats. It contains two measures of rests. Above the first measure is a '5' with a horizontal line underneath. The second measure contains two whole notes. Dynamics are marked *mp* and *f* with hairpins. The time signature is 4/4.

22

Musical staff with a bass clef and a key signature of two flats. It contains four measures of music. The first measure is a whole note. The second and third measures are quarter notes. The fourth measure is a half note with an accent (>) and a slur. Dynamics are marked *mp* and *fp* with hairpins. The time signature is 4/4.

C

Musical staff with a bass clef and a key signature of two flats. It contains four measures of music. The first measure is a whole note with an accent (>). The second and third measures are quarter notes. The fourth measure is a half note. Dynamics are marked *ff* with a hairpin. The time signature is 4/4.

30

Musical staff with a bass clef and a key signature of two flats. It contains six measures of music. The first measure is a quarter note with an accent (>). The second and third measures are quarter notes with a slur. The fourth and fifth measures are quarter notes with accents (>). The sixth measure is a quarter note with an accent (>). Dynamics are marked *ff* with a hairpin. The time signature is 4/4.

D

Musical staff with a bass clef and a key signature of two flats. It contains four measures of music. The first measure is a whole rest. The second and third measures are quarter notes with accents (>). The fourth measure is a half note with an accent (>) and a slur. Dynamics are marked *ff* and *fp* with hairpins. The time signature is 4/4.

38

Musical staff with a bass clef and a key signature of two flats. It contains five measures of music. The first four measures are whole notes with accents (>) and a slur. The fifth measure is a quarter note with an accent (>). Dynamics are marked *ff* and *fff* with hairpins. The time signature is 4/4.

Tuba

Dickinson 2017 Pre-Show

5-11-17

inspired by
James Horner's "Apollo 13 - Main Title"

Arr. by
Carol Brittin Chambers

♩ = 128

Musical staff with rests and measure numbers 7 and 4.

A

♩ = 152

B

Musical staff with rests and dynamics *mp* and *f*.

22

Musical staff with notes and dynamics *mp* and *fp*.

C

Musical staff with notes and dynamics *ff*.

30

Musical staff with notes and dynamics.

D

Musical staff with notes and dynamics *ff* and *fp*.

38

Musical staff with notes and dynamics *ff* and *fff*.